



# CFX 125

## 1-1/4" x 1" End Suction Centrifugal Pump

The CFX 125 End Suction Centrifugal Pump is a robust, high-efficiency solution designed to tackle demanding applications across marine, industrial, and commercial environments. Built from 316 investment-cast stainless steel, it offers exceptional resistance to corrosion and long-lasting durability, even when handling aggressive chemicals and challenging fluids.

Engineered for adaptability, the CFX 125 comes with 1-1/4" x 1" NPT ports and supports 90° rotational adjustments, ensuring flexible installation options. It includes a carbon/ceramic/Viton bellows shaft seal as standard, with alternative sealing configurations available upon request for specialized requirements.

Delivering up to 80 GPM (18 m<sup>3</sup>/h) and achieving a maximum head of 87 feet (27 m), this pump combines efficiency with reliability. Whether your operations are in agriculture, marine, or industrial sectors, the CFX 125 provides consistent performance and dependable service for a wide range of applications.

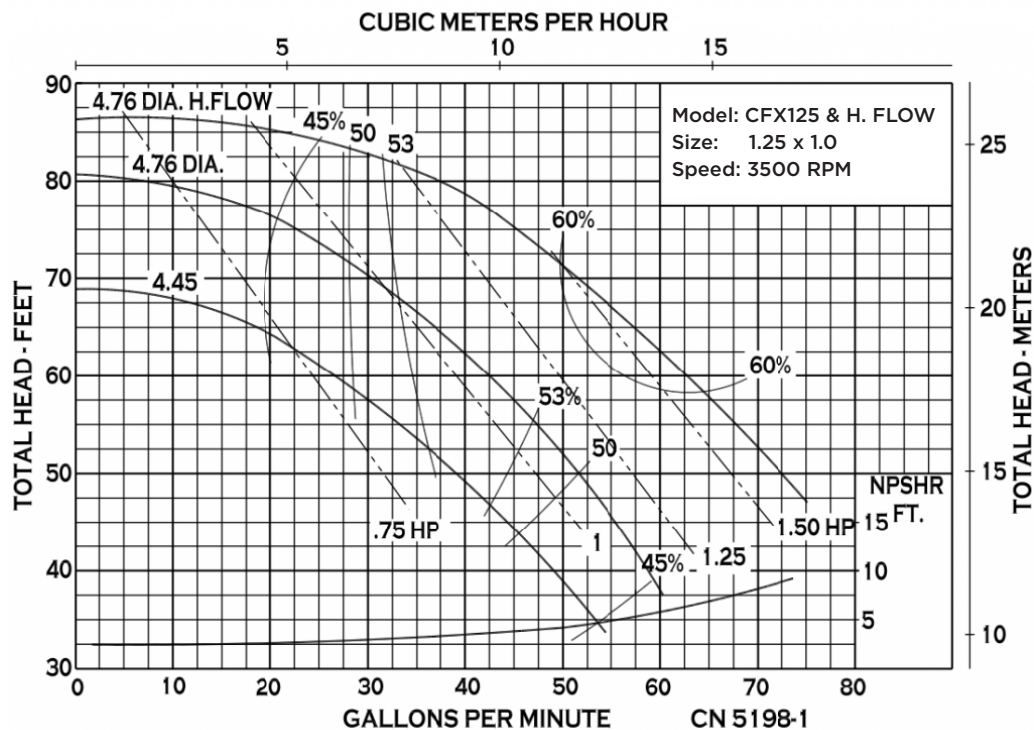
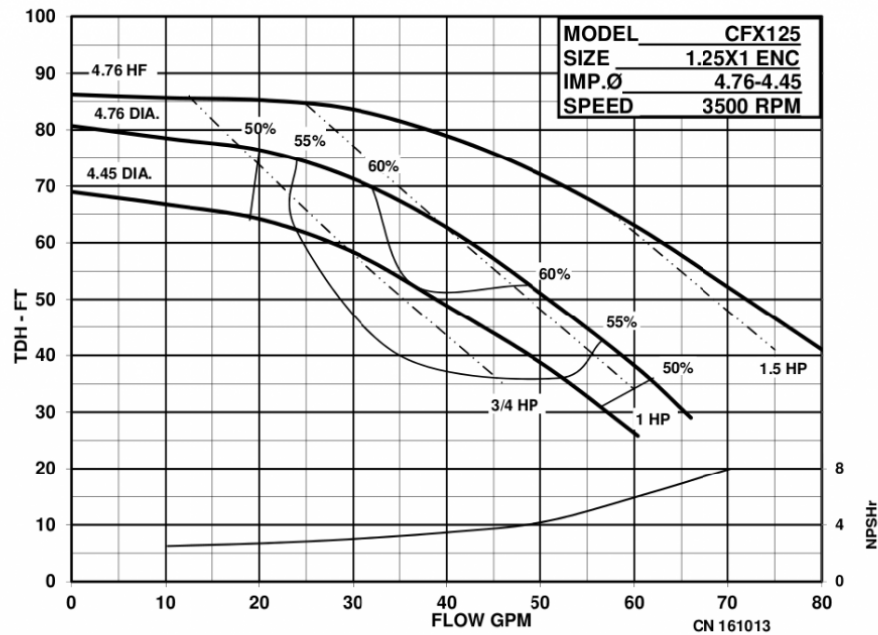
### SPECIFICATIONS:

<b>Suction / Discharge</b>	1-1/4" NPT x 1" NPT
<b>Materials of Construction</b>	316 stainless steel
<b>Flow</b>	Up to 80 GPM (18 m <sup>3</sup> /h)
<b>Head Feet</b>	Up to 87' (27 m)
<b>Impeller</b>	4.76" 316 stainless steel enclosed (investment cast)
<b>Drive Options</b>	Close coupled 115V AC Close coupled 230V AC Pedestal
<b>Seal</b>	Carbon / ceramic / Viton bellows 150 PSI (10 bar), Special seals upon request

### Application:

- Agricultural
- Commercial
- Industrial
- Marine

## PERFORMANCE CURVES

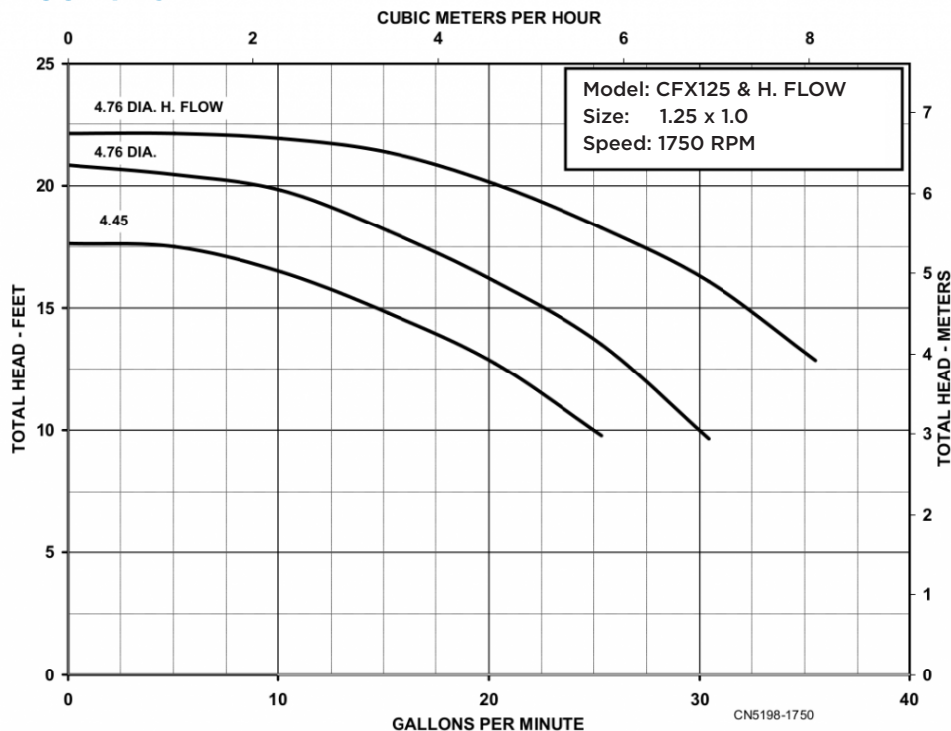




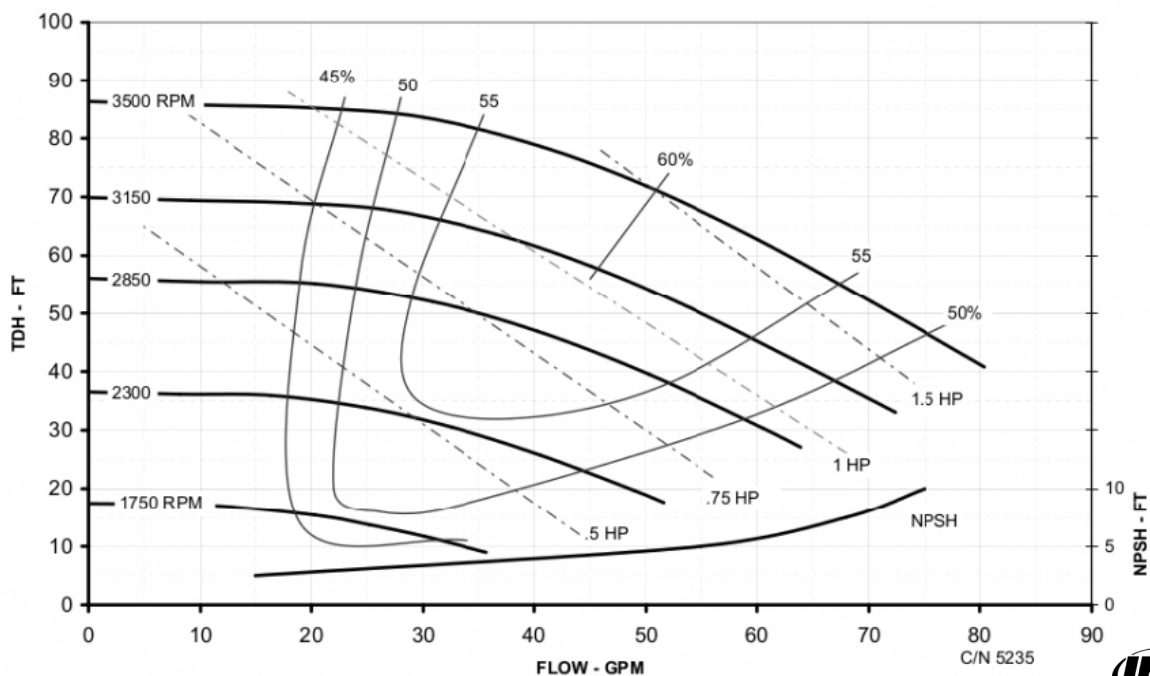
An Ingersoll Rand Business

# CFX 125

## PERFORMANCE CURVES



CFX125 - HF  
4.76 Impeller



12500 South Pulaski Road  
Alsip, IL 60803, USA  
Phone (800) 563-8006

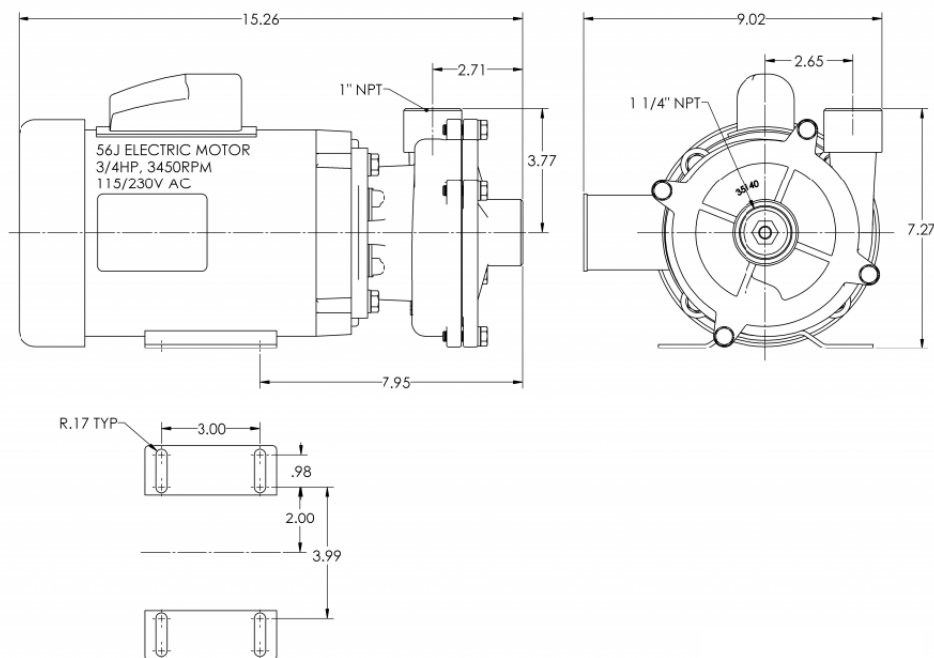


An Ingersoll Rand Business

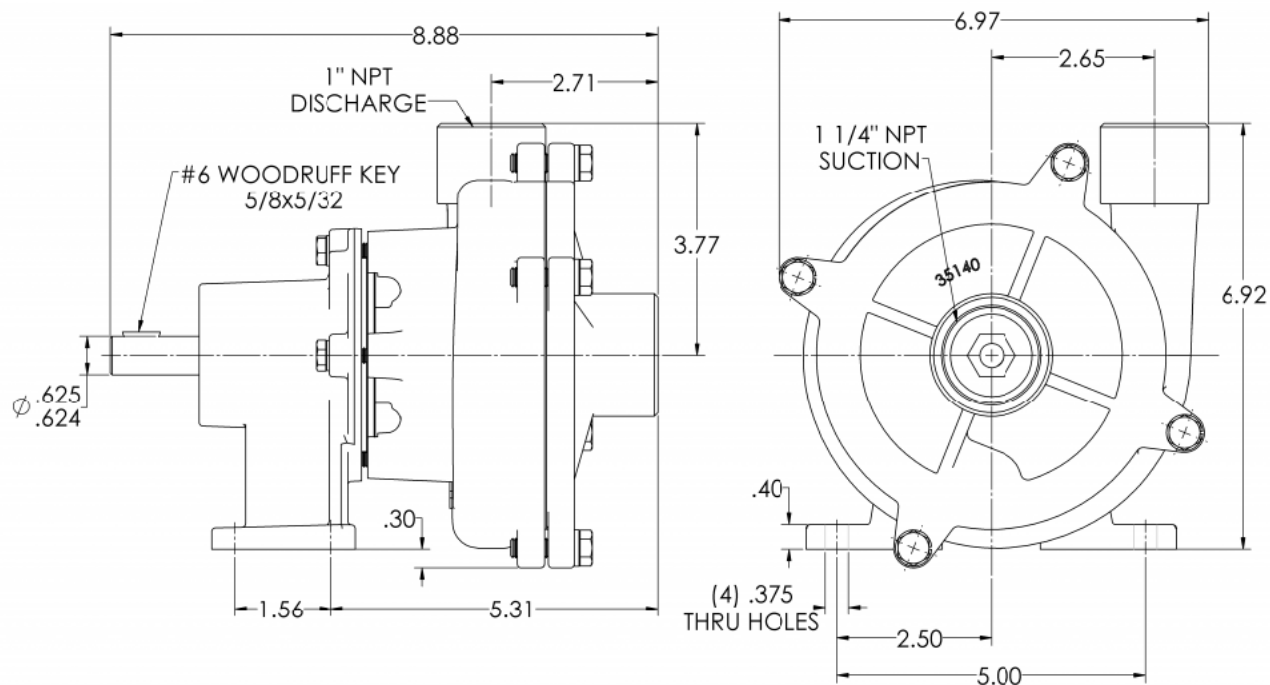
# CFX 125

## DIMENSIONS

CFX125 with AC Motor



CFX125 Pedestal



\* For complete parts lists and troubleshooting guidance, please refer to the MP Pumps Installation Operation & Maintenance (IOM) Manual.



12500 South Pulaski Road  
Alsip, IL 60803, USA  
Phone (800) 563-8006